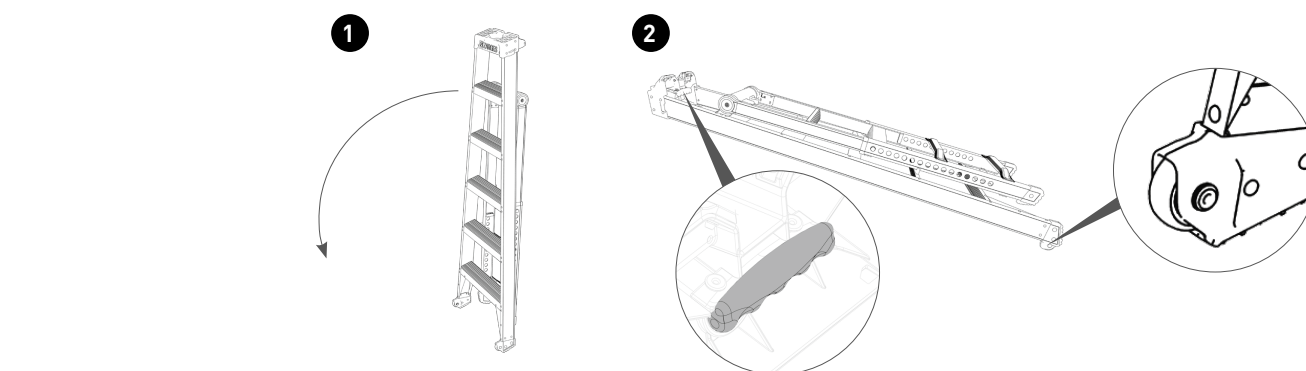
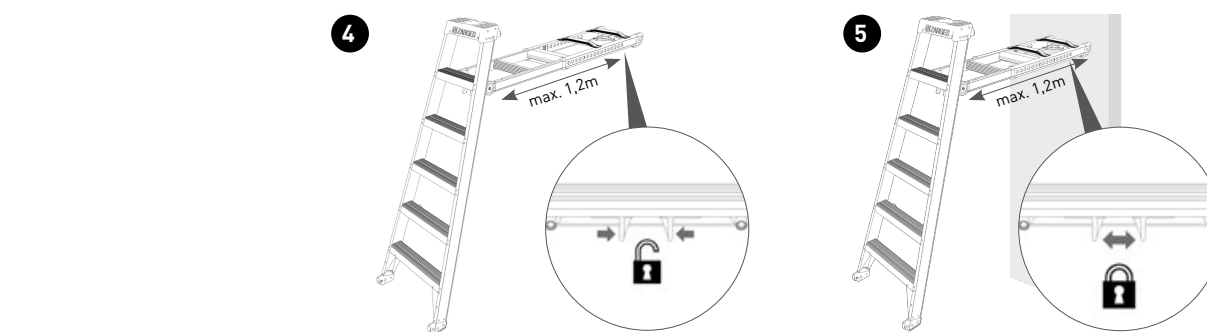
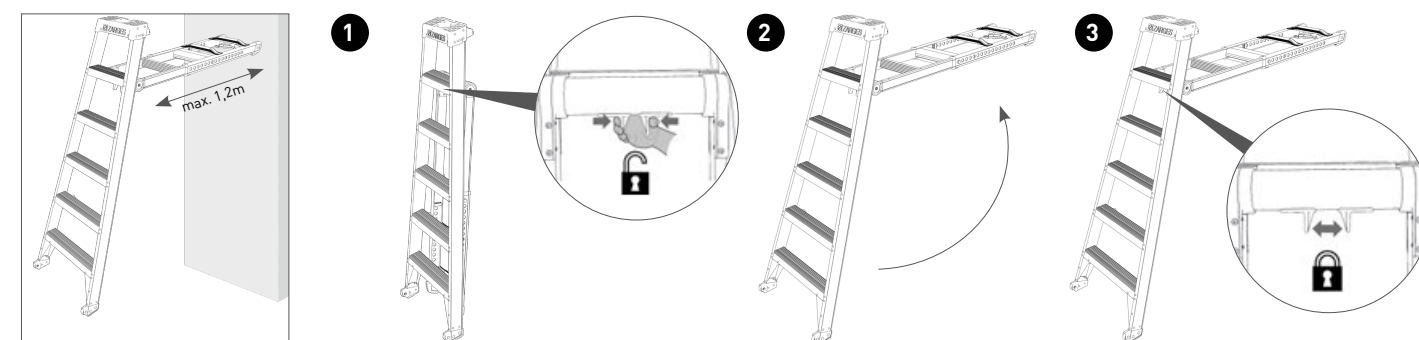
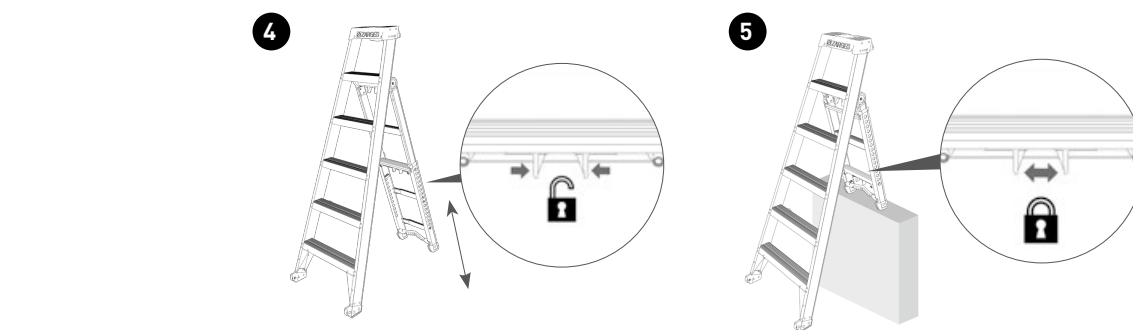
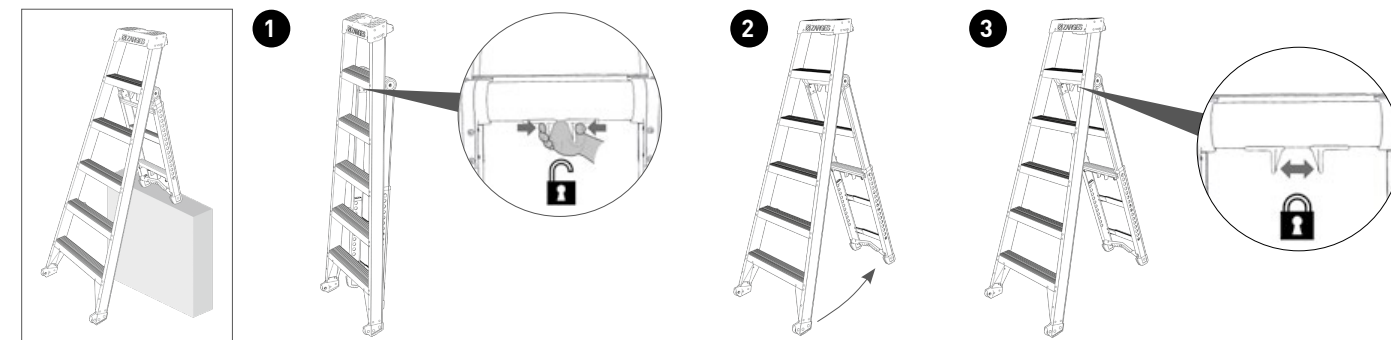
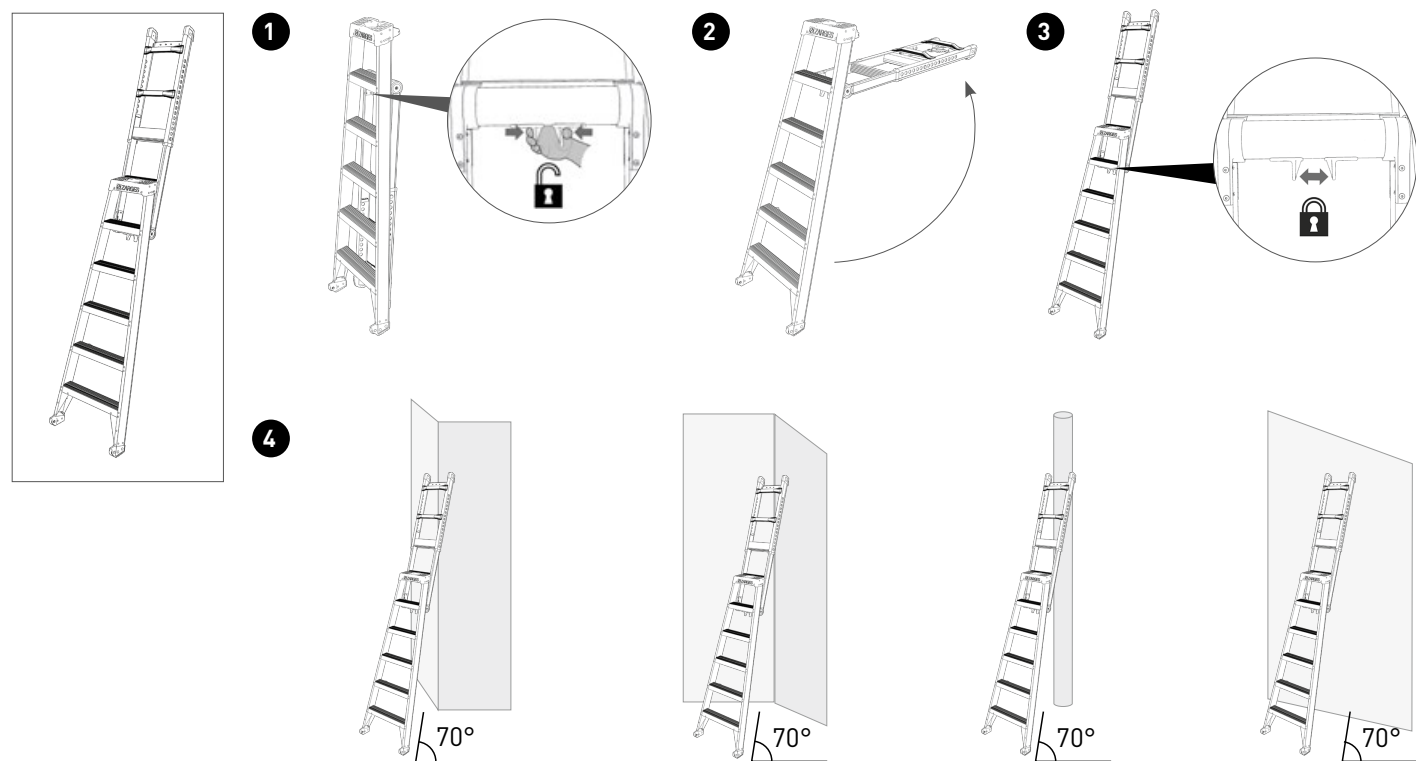
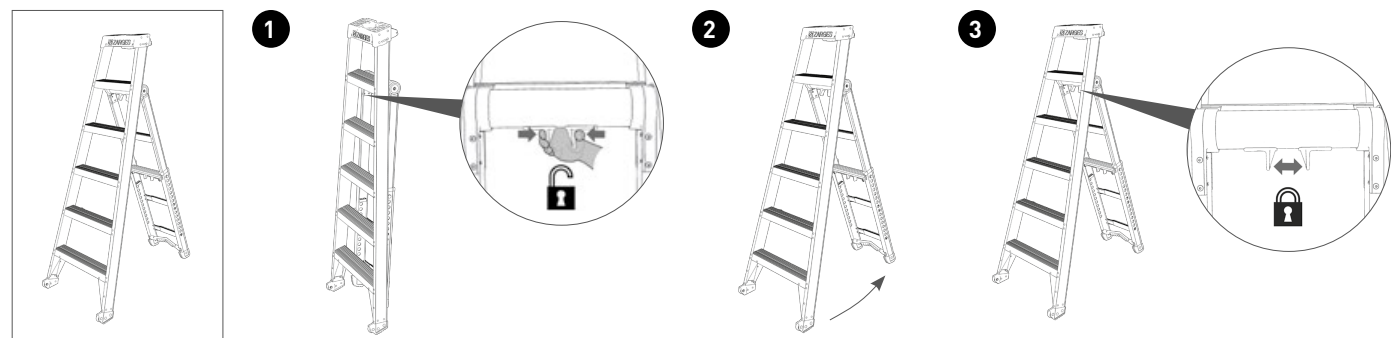
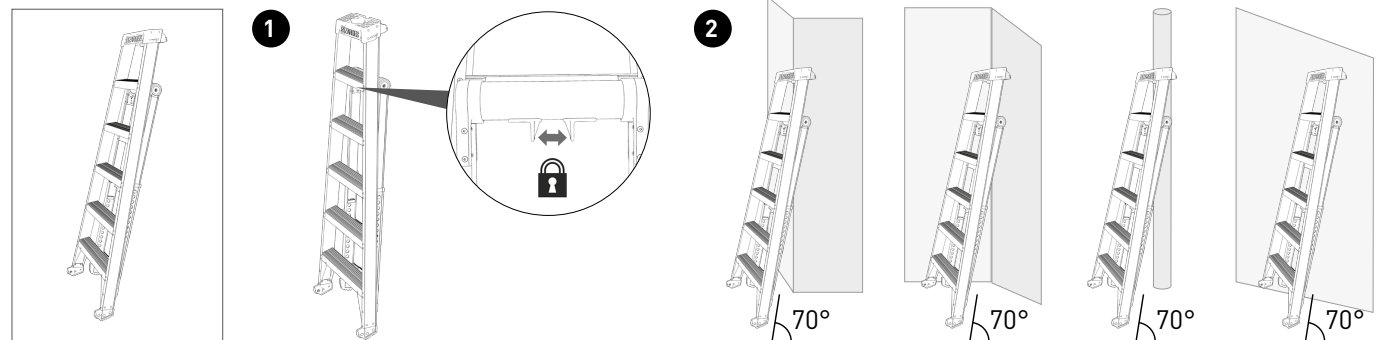


MultiMaster 5

EN Instruction Manual

4





1 About these instructions

2 Intended use

3 General safety instructions

4 Markings on the product

5 Scope of delivery

6 Setup and use

7 Maintenance and servicing

7.1 Commercial use

7.2 Periodic inspections

8 Transportation and storage

9 Packaging and disposal

1 About these instructions

These instructions for use describe the safe use of the multipurpose ladder as a stepladder, stepladder suitable for use on stairs, single ladder or extended ladder.

- Please read through these instructions before use and retain them for future reference.
- These instructions must be included when you hand over the ladder to another person.

2 Intended use

This ladder is a piece of mobile work equipment that can be used in different places.

This ladder allows users to perform small-scale work at heights where the use of other equipment is inappropriate (see German Ordinance on Industrial Safety and Health).

This ladder may only be used in accordance with these instructions. Any other use is considered improper.

The manufacturer does not accept any liability for any damage resulting from improper use.

Any modifications to the ladder that are not authorised by the manufacturer will void the warranty and exclude any liability of the manufacturer.

3 General safety instructions

In addition to the general safety instructions, users must take note of the general markings on the product (see “**General markings**” on page 5).

1. The ladder may only be set up and used by persons familiar with these assembly and use instructions.
2. The ladder and its parts may not be modified.
3. Before using the ladder, check that all its parts are assembled correctly and functioning properly.
4. When using the ladder, there is a risk of the user falling from the ladder or the ladder toppling over. This may cause injury to persons or damage to property.
5. Make sure that the ladder is suitable for the application in question and is set up in a proper position during use.
6. The ladder should only be set up on an even, horizontal and stable surface that is capable of withstanding the load. Use load-distributing pads if necessary.
7. Do not move the ladder while standing on it.

- 4 8. When setting up the ladder, beware of the risk of collisions, e.g. with pedestrians, vehicles or doors. Whenever possible, lock any doors (except emergency exits) and windows in the working area.
- 4 9. The ladder must be stand on its feet, not on its rungs or steps.
- 4 10. Work involving the use of the ladder must be carried out in a way that minimises the risk of the user falling or the ladder toppling.
- 6 11. When using the product outdoors, take safety precautions to protect it against the influence of wind.
- 6 12. The ladder should only be used for performing light work over a short period of time.
- 6 13. Fatigue while using the ladder is detrimental to safety. Never work for long periods of time on the ladder without taking regular breaks.
- 7 14. Only stand on surfaces intended to be stepped on.
- 7 15. Do not use the ladder if it is soiled (with e.g. wet paint, dirt, oil or snow).
- 7 16. Do not use the ladder outdoors in poor weather conditions, e.g. strong winds.
- 7 17. Never move the ladder from above.
- 7 18. Always use non-conducting ladders when you are required to work around electricity.
- 7 19. The ladder should be folded and/or unfolded from the ground. Never change the setting or position when using the product.
- 7 20. Holding the moving parts during adjustment.

Commercial use

21. To ensure the product is used properly, carry out a risk assessment in accordance with the legal requirements in the country of use.
22. The rules and regulations applicable in the country of use must be observed, especially when using the product commercially.

4 Markings on the product

Do not remove the safety markings or cover them with adhesive labels or paint.

Depending on the product design, not all of the safety markings described below will appear on the ladder.

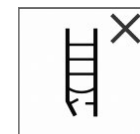
General markings



Falling from the ladder may cause serious injuries.



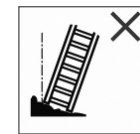
Read the instructions in their entirety. Additional information on the ladder is available online.



Never use a damaged ladder. Inspect the ladder for signs of damage upon delivery and before every use.



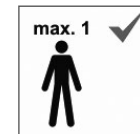
The maximum load capacity may not be exceeded.



Do not use the ladder on an uneven or unstable surface.



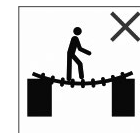
Avoid leaning too far to the side of the ladder.



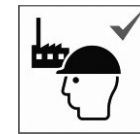
Only one person may be on the ladder at any time.



Always face the ladder when climbing or descending it.



Never use the ladder to bridge a gap.



The ladder is suitable for both commercial and household use



Do not set up the ladder on a soiled surface.



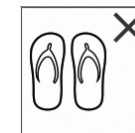
Ensure you grip the ladder securely when climbing or descending it.



Avoid work that involves exerting a lateral load on the ladder, e.g. drilling into solid materials to the side of the ladder.



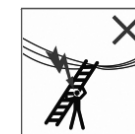
While using the ladder, do not carry heavy or bulky equipment.



Wear appropriate shoes while climbing the ladder.

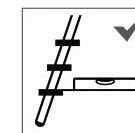


Do not use the ladder if you have limited physical ability. Take your health and physical condition into account. Consumption of medications, alcohol or drugs is detrimental to safety.

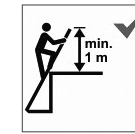


Identify all risks posed by electrical equipment in the working area, e.g. high-voltage power lines or other exposed electrical equipment. Do not use the ladder if there are electrical risks.

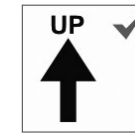
Product-specific markings



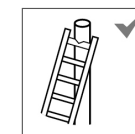
The treads of the hinged ladder must be horizontal



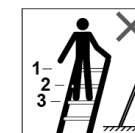
When using a single ladder to access greater heights, ensure that the ladder extends at least 1 m beyond the resting point and secure the ladder where necessary.



The ladder may only be used in the orientation specified.



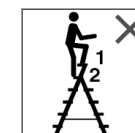
The ladder can be leaned against a pole.



Never stand on the top three rungs/treads of a leaning ladder



Do not use the ladder to cross to another surface.



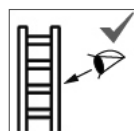
Never stand on the top two treads/rungs of a stepladder that does not have a platform and fittings for hands/knees to hold on to.



Do not ascend the stepladder from this side.



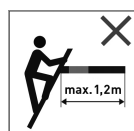
Before using the ladder, always make such that the locking mechanism is in order and fully locked.



Check that the ladder is in proper condition.



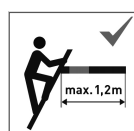
Only use the ladder when both ladder sections are fully secured and unfolded.



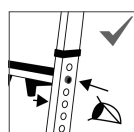
Support section in offset mode must be no longer than 1.2 m.



Do not use the support section as a shelf in offset mode.



Ladder can be used in offset mode up to a maximum distance of 1.2 m.



Before use, ensure that the locking mechanism is in order and fully locked.



Do not step on the marked surface

5 Scope of delivery and assembly

1 x Multipurpose ladder
1 x Instructions

6 Setup and use

For functioning, see page 2. For commercial use, before using the ladder for the first time, it is recommended to perform an inspection and record it on an inspection label. (See “**Periodic inspections**” on page 7).

IMPORTANT

Before using the ladder, always make sure that the hinges/locking mechanism are in order and undamaged.

See page 2.

7 Maintenance and servicing

To ensure safety when using the ladder, we recommend using only original spare parts. Using spare parts from other manufacturers that do not meet the required specifications may void the warranty. Care and maintenance of the ladder are meant to ensure its proper functioning. The ladder has to be regularly inspected for signs of damage. It is necessary to ensure that moving parts are functioning properly. Repair work on the ladder has to be carried out by a competent person and in accordance with the manufacturer's instructions.

Cleaning

The ladder should be cleaned immediately after use if it is visibly soiled. This applies especially to all its moving parts. The product can be cleaned using water and a small amount of conventional cleaning agent.

Do not allow cleaning agents to seep into the soil.

- Dispose of used cleaning solutions in accordance with the applicable environmental regulations.

Lubricating moving parts

- Lubricate all moving parts with conventional lubricating oil. Select a thin-bodied oil when using the product in winter.
- Dispose of oil-soaked cleaning rags according to the relevant environmental regulations.

WARNING

Slippery standing surfaces are a source of fall hazard! Lubricating oil and liquids on standing surfaces can cause personnel to fall and injure themselves.

- Wipe off excess oil.
- Remove any soiling (e.g. wet paint, snow).

7.1 Commercial use

For commercial use, it is necessary to have the ladder periodically inspected by a competent person to ensure it is in good working order (visual inspection and functional check). It is crucial to define the type, scope and schedule of the necessary inspections. The intervals between inspections depend on the operating conditions, especially the frequency of use, the stress the product is subject to during use and the frequency and severity of previously found defects.

The user must ensure that defective ladders are removed from use and stored in such a way that makes it impossible for them to be used until they are properly repaired or disposed of.

The complete inspection sheet can be downloaded from the manufacturer's website.

7.2 Periodic inspections

The ladder must be regularly inspected by a competent person for operational safety.

The competent person is to be authorised by the user to perform the required inspection and is to take part in seminars required by law of the country in question.

- The inspection intervals must be appropriate for the specific operating conditions.
- Inspection must be carried out at least once a year.
- The inspection must be documented. Check sheets for ladder inspection are available on the manufacturer's website.
- After the product has passed the inspection, attach an inspection label on the product. The month and year in which the next inspection is due must be clearly visible.

Defective or incomplete ladders and parts must no longer be used.

Stiles/legs

- Check for deformation, bending, twisting and cracks.
- Check for dents, damage, sharp edges, corrosion, chipping, burrs and signs of wear.
- Check the condition of the attachment points for other parts.
- Check for completeness and secure attachment.

Hinges

- Check for warping, dents, cracks and proper functioning of the fasteners.
- Check for damage and corrosion.

Fittings, hinges

- Check for damage, cracks, bends and corrosion.
- Check for signs of wear and proper functioning.
- Check for completeness and secure attachment.

Rungs, treads, guide brackets, platform

- Check for deformation and cracks.
- Check for dents, damage, sharp edges, chipping, burrs and signs of wear.
- Check for secure attachment to the stiles.
- Check the locking mechanisms (e.g. locking latch, rung hooks) for signs of wear and proper functioning.

Ladder feet

- Check for damage and corrosion.
- Check for signs of wear and proper functioning.
- Check for completeness and secure attachment.

Labelling

- Check for legibility and damage.

Accessories

- Check for completeness and secure attachment.

Soiling, dirt

- Check for soiling caused by paint, dirt, grease or oil.

8 Transportation and storage

- Store ladders in such a way that they cannot be damaged (e.g. bent or twisted).
- Protect ladders from the influence of weather and keep them from unauthorised use (e.g. by children).
- When transporting ladders to or from their place of storage, they should be properly secured to prevent slipping, bumping and falling over.
- Do not throw the ladder during loading and unloading.
- Ensure ladders are properly secured when transporting them on a vehicle's roof racks or inside a vehicle.

9 Packaging and disposal

- The packaging material may cause suffocation. Dispose of the packaging material properly.
- Dispose of ladders and their parts in accordance with local laws and regulations.